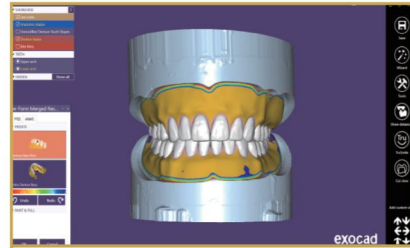


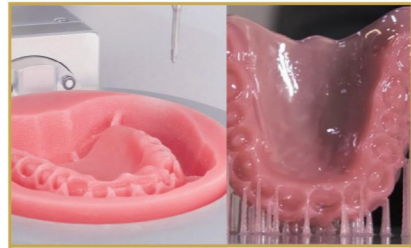
Digital Removable Denture Prosthetics



1 Oral scan with i-Vinci intraoral scanner



2 Choose Delux series and design



3 3D print or mill the base



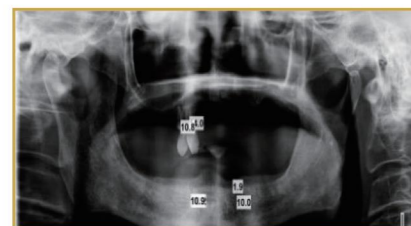
4 Bond teeth with Digital Bond Kit



5 Final result



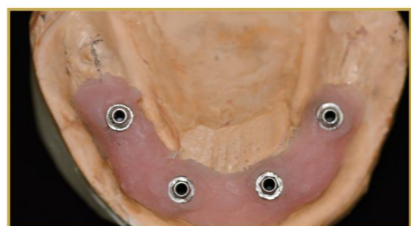
Implant-Supported Denture Prosthetics



1 Take X-ray and decide the placement location for the dental implants



2 Place implant inside the bone and add locator platform



3 Take impressions and place supported denture onto model



4 Dentures with holes for implants



5 Final result



Multiple Solutions

- > Multifunctional occlusal surface design
- > Tailored moulds for diverse faces
- > 30 total moulds to choose from
- > Suitable for implant-supported dentures
- > Exceptional hard composite posteriors available: 30M, 32M



Easy to Order

Web order: [store.vincismile.com](http://store.vincismile.com)  
 App order: TEETH ASAP  
 Contact sales: per business card info  
 Email and Phone: [marketing@vincismile.com](mailto:marketing@vincismile.com), 626 283 5808

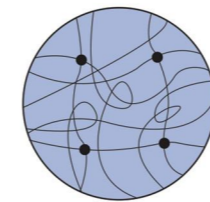


Natural Aesthetics

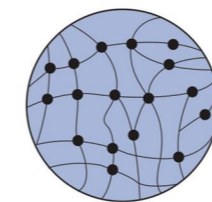
Five-layer outlook and high translucency  
 Harmonized layering of posterior teeth  
 Smooth surface texture with aesthetics  
 BL2, BL3, A00 and A0 available at request

Reliable Durability

- > Double cross-linked material, the Extended Polymer Network (EPN)
- > Higher molecular weight and wear-resistance
- > Lower water absorption and higher stain-resistance
- > More durable than conventional PMMA

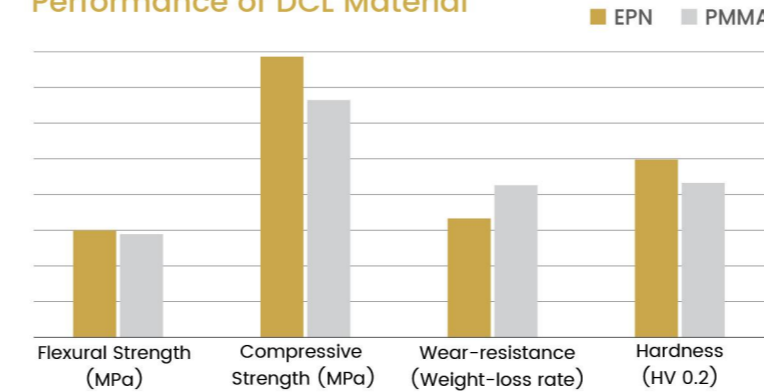


PMMA Polymer



EPN Polymer

Performance of DCL Material



Digital Design for More Fitting Dentures

Dental libraries available in exocad! (Adding to 3Shape soon)  
 Provide your dentures with high quality and esthetics.

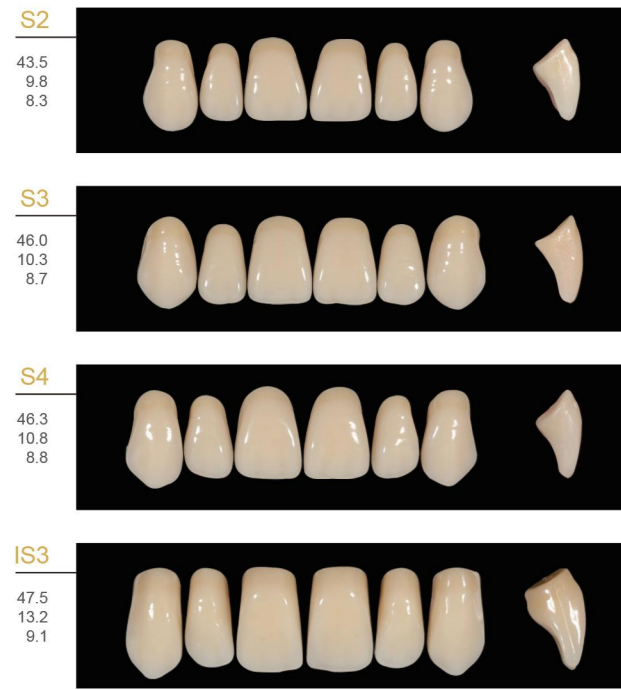


# NOBILDENT<sup>®</sup> Delux EPN

Let Your Smile Shine with NOBILDENT



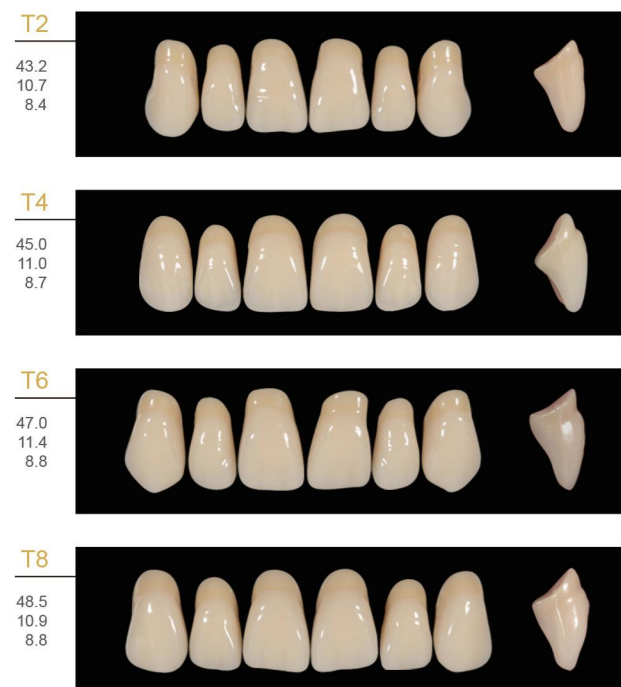
**UPPER ANTERIOR SQUARE**



**UPPER ANTERIOR OVOID**



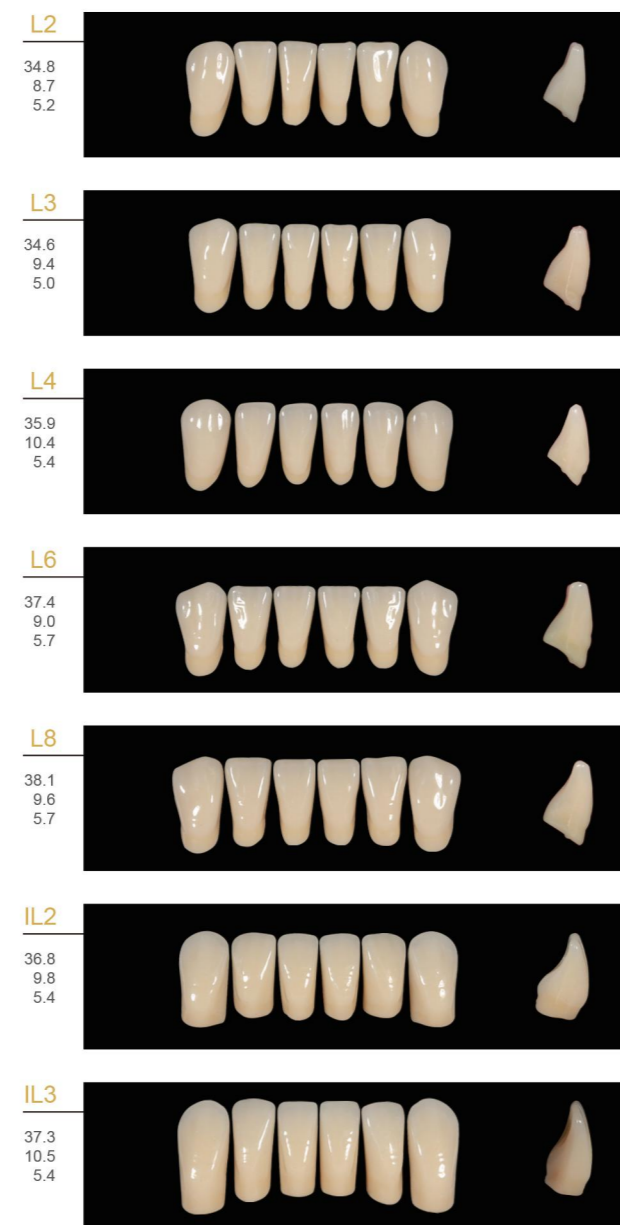
**UPPER ANTERIOR TAPERING**



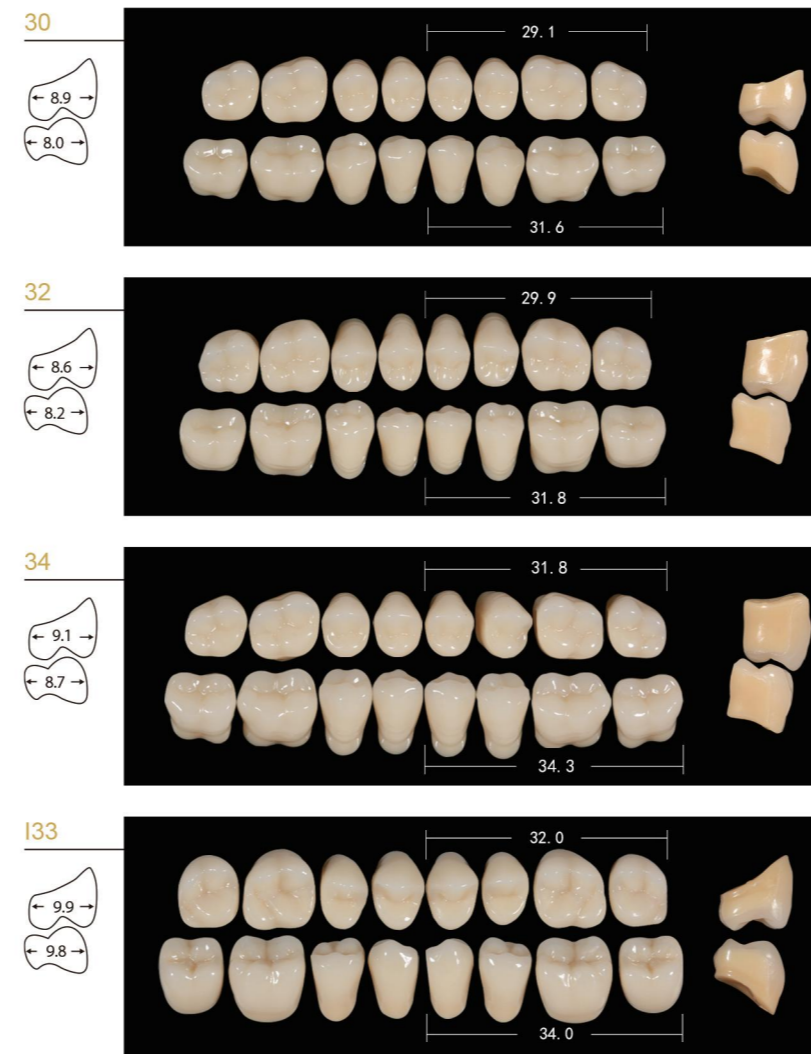
**UPPER ANTERIOR TAPERING**



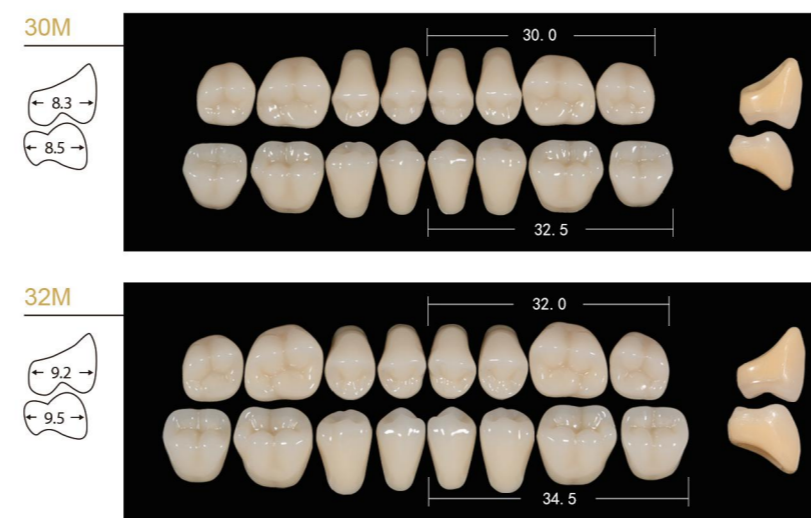
**LOWER ANTERIORS**



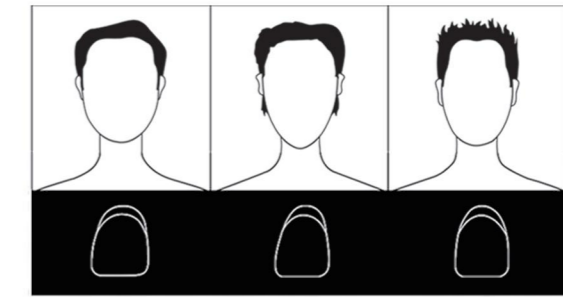
**POSTERIORS 28°**



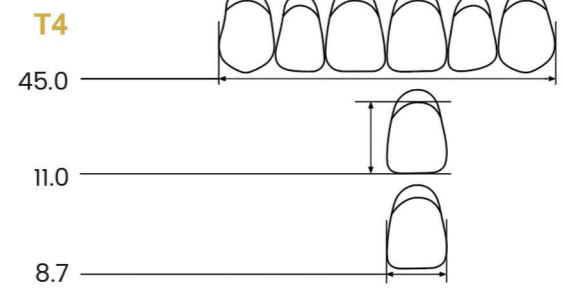
**POSTERIORS 20°(EXTRA HARD TEETH)**



All measurements in millimeters



▲ SQUARE ■ TAPERING ● OVOID



Actual Size: All measurements in millimeters

**SUGGESTED ARTICULATIONS**

ANTERIORS		POSTERIORS	
UPPER ANTERIORS	LOWER ANTERIORS	POSTERIORS 28°	POSTERIORS 20°
S2	L2	30	30M
S3	L2	34	32M
S4	L3	34	32M
T2	L2	32	30M
T4	L4	32	30M
T6	L6	34	30M
T8	L8	34	32M
IO2	IL2/IL3	I33	32M
IS3	IL2/IL3	I33	32M
IT2	IL2/IL3	I33	32M
IT3	IL2/IL3	I33	32M