

Perfectly Integrating into Your Clinical Practices

Utilized right, this innovation can have a tremendous impact on your practice, streamlining direct restoration workflow, increasing appointments, and much more.

Multiple Indications

- Direct anterior and posterior restorations (including occlusal surfaces)
- Core Build-ups
- Splinting
- Indirect restorations including inlays, onlays and veneers

With TrusFIL X-Blend, achieving a natural and harmonious restoration has never been easier. Experience the future of aesthetics restoration with a innovative composite that truly matches every patient.



VinciSmile®

TrusFIL X-Blend

ONE syringe for ALL ranges of teeth shades

TrusFIL Direct Restorative Solution

Much Simpler, More Durable, More Smiles



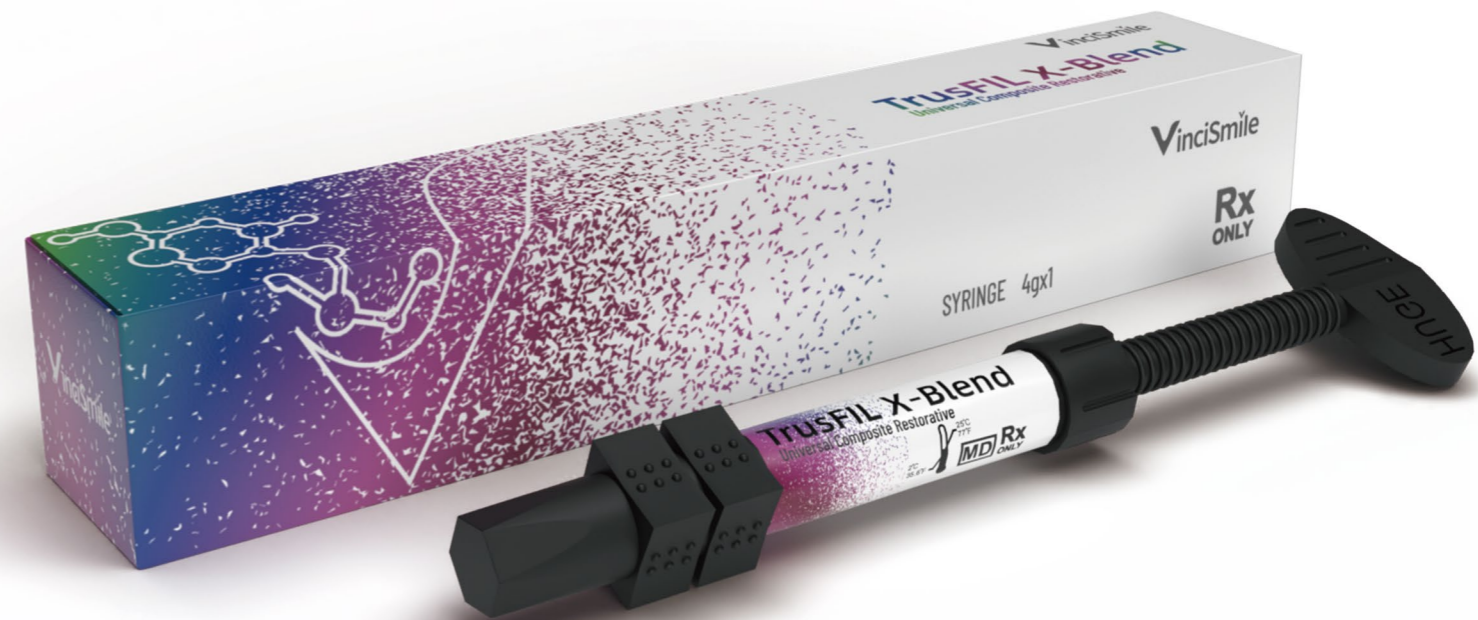
TrusFIL Universal Composite Restorative

TrusFIL Universal stands out among composites due to its unexpected strength and polish retention imparted by VinciSmile nanotechnology.



TrusFIL-Flow Flowable Composite Restorative

Featuring satisfying viscosity and self-leveling technology, TrusFIL-Flow Flowable is an ideal composite, can be applied as base/liner to create a perfect plane for subsequent restoration.



HugeBond Universal FliPro Light Cure Dental Adhesive

The innovation of 8th generation, MDP Monomer, one component and flip-open design deliver reliable bonding strength and simpler operation.



P-Etchant Phosphoric Acid Etching Gel

Exceptional choice for pre-treatment, roughens the enamel and dentin surface effectively, and fully opens dentine tubules for stronger bonds.

Ultimate Color-Matching
Composite Restorative



VINCISMILE GROUP LLC

Add: 20524 Carrey Rd. Walnut, CA 91789, USA

Email: marketing@vincismile.com Tel: +1 626 283 5808

Web: www.vincismile.com Shop with us online at store.vincismile.com

[f](#) [@](#) [v](#) [in](#)
Follow @VinciSmile

Simplicity, Aesthetics & Better Longevity.....



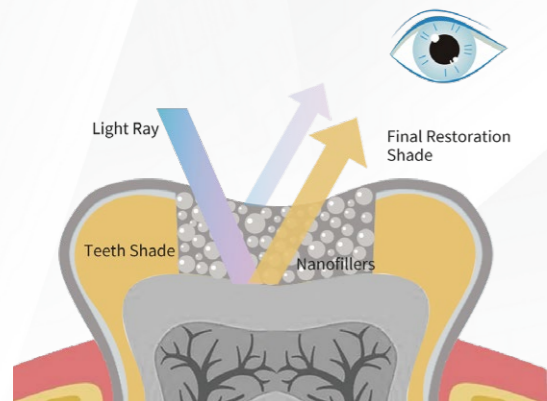
One single shade matches all VITA 16 shades.

Product Highlights

- No wasted shades with only one TrusFIL-Universal shade, changing your restoration routine
- Take the guesswork out of finding the accurate shades matching patients' natural teeth
- Exceptional longevity with low shrinkage of only 1.06%
- Impressive physical properties due to TrusFIL Nanofiller technology
- 3.5 mm depth of cure – saves time
- Easy to polish, highly stain resistant with a high gloss

Innovative TrusFIL Technology- One Shade Fits All

Utilizing special fillers and innovative TrusFIL Technology, TrusFIL X-blend exhibits succeeds in covering all shades in only ONE universal shade composite. When TrusFIL X-Blend is filled into the cavity, the colors and optical properties, the resin-covered tooth structure underneath, and the remaining exposed tooth structure all interact. That's how these factors together affect light interaction and lead to **the Chameleon Effect.**



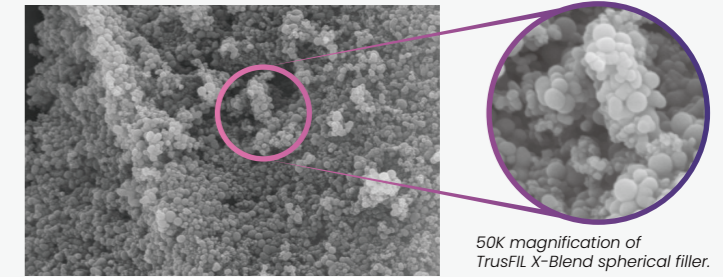
▲ Take the guesswork out of selecting the composite shade with this innovative color-matching technique that creates the perfect match.

Strengthened Properties for Longevity

TrusFIL X-Blend is an upgraded composite, delivers an amazing shade-matching magic without compromising strength.

Compared to TrusFIL Universal, TrusFIL X-Blend shows a quite similar performance in practice, and provides an easier operation.

TrusFIL's leading filler technology results in excellent physical properties and outstanding polish.



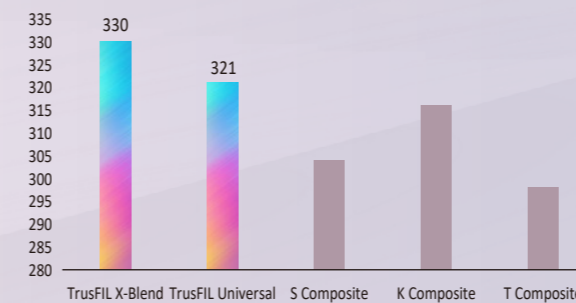
50K magnification of TrusFIL X-Blend spherical filler.



* Data from VinciSmile dental lab.

Polymerization shrinkage/ %	1.06 %
Elastic Modulus/ GPa	11.5 GPa
Water Absorption/ $\mu\text{g}/\text{mm}^3$	18.2 $\mu\text{g}/\text{mm}^3$
Solubility/ $\mu\text{g}/\text{mm}^3$	0.5 $\mu\text{g}/\text{mm}^3$
Depth of Curing/ mm	3.5 mm

Flexural Strength/ MPa



Compressive Strength/ MPa

